

# Explosion-Proof Hexagon Metal Blind Plug for Motors

This explosion-proof hexagon metal blind plug is designed for use with motors and other electrical devices when cable input is not required. It provides a safe and reliable method for closing off unused ports or openings in explosion-proof enclosures.

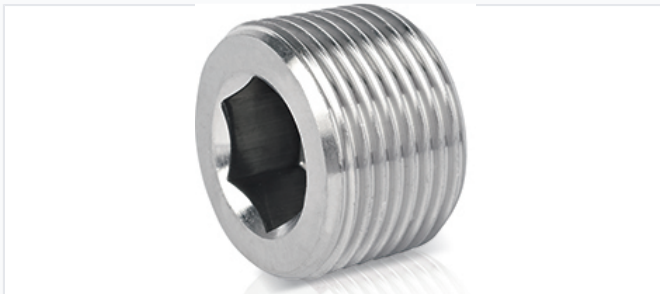


## Overview

### Explosion-Proof Hexagon Blind Plug

This explosion-proof metal hexagon blind plug is designed to securely seal unused cable entries in motors and electrical equipment, ensuring safety in hazardous environments. Engineered for durability, it provides reliable protection against ingress of dust, moisture, and explosive gases. It is suitable for a wide range of industrial applications, including petroleum, chemical, pharmaceutical, and military facilities.

## Technical Specifications



High-strength metal construction designed for secure closure in electrical motor applications.



Precision-engineered plug featuring a hexagonal recess for easy installation and removal.

### Ingress Protection

IP66 • IP68 (with O-ring)

### Construction Materials

Brass, Nickel-Plated Brass, Stainless Steel 304, Stainless Steel 316

### Seal Material

PTFE washer

## Operating Environment

### Hazardous Zone Compatibility

- Zone 1 (Explosive gas)
- Zone 2 (Explosive gas)
- Zone 21 (Inflammable dust)
- Zone 22 (Inflammable dust)

### Static Temperature Range

**-60 °C**

Min Temp

**100 °C**

Max Temp

**120 °C**

Short-term Max

### Dynamic Temperature Range

**-20 °C**

Min Temp

**80 °C**

Max Temp

**100 °C**

Short-term Max

## Thread Specifications

### Thread Types

Standard	Sizes
Metric	M12, M16, M18, M20, M25, M32, M40, M50, M63, M75, M80 (all *1.5)
NPT	1/2", 3/4", 1", 1-1/4", 1-1/2", 2", 3", 4"
G (BSP)	1/2", 3/4", 1", 1-1/4", 1-1/2", 2", 2-1/2", 3", 4"