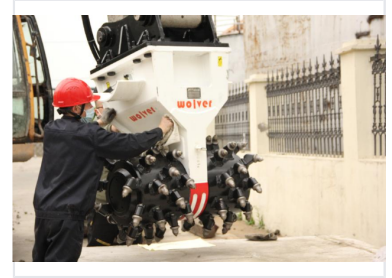
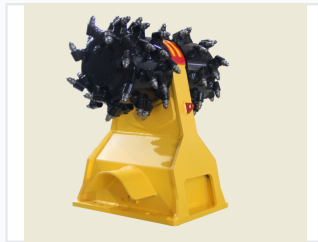
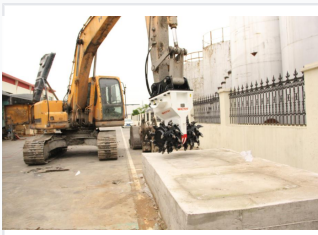


Excavator Rotary Drum Cutter

The excavator rotary drum cutter is engineered for rock and concrete grinding, trenching, and demolition. It utilizes high-torque hydraulic motors to drive the cutting drums, providing powerful and precise material removal.



ADDITIONAL IMAGES



Product Overview

High-Performance Rotary Drum Cutter

This hydraulic rotary drum cutter is engineered for excavators ranging from 0.5 to 125 tons, offering a robust solution for demanding construction and mining tasks. Designed for precision and durability, it excels in applications such as rock excavation, concrete demolition, trenching, and surface profiling. The attachment utilizes high-torque hydraulic motors to ensure efficient material removal in even the most challenging environments.

Technical Specifications

Excavator Weight Range

0.5 ton

Min Excavator Weight

125 ton

Max Excavator Weight

Primary Applications

Rock Excavation, Concrete Demolition, Trenching, Profiling

Compliance & Quality

Certifications

ISO 9001 • CE Certified

Supported Industries

- Engineering Machinery
- Coal Mine Machinery
- Oil Machinery
- Ship Machinery
- Metallurgical Machinery
- Port Machinery
- Military Vehicles

Intellectual Property

50 patents