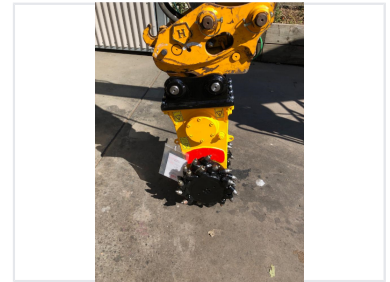


Excavator Rotary Drum Cutter for Mining and Milling

This drum cutter BC2 is designed for mini excavators between 0.7 and 2.5 tons. It is suitable for concrete wall profiling, trench excavation, rock excavation, demolition, digging, scaling, tunneling, grinding, and quarrying.



ADDITIONAL IMAGES



Product Overview

High-Performance Rotary Drum Cutter

This hydraulic rotary drum cutter is engineered for mini excavators in the 0.7 to 2.5-ton range, providing exceptional versatility for demanding construction and mining tasks. It excels in applications ranging from concrete wall profiling and trench excavation to rock demolition and tunneling. Designed for durability and efficiency, this attachment helps operators achieve precise material removal with minimal downtime.

Technical Specifications

Compatible Excavator Weight

0.7 ton
Min Weight

2.5 ton
Max Weight

Model

BC2

Certifications & Quality

Certifications

ISO 9001, CE

Applications

Primary Applications

- Concrete wall and surface profiling
- Trench excavation
- Rock excavation
- Demolition trenching
- Scaling
- Tunneling
- Grinding
- Quarrying