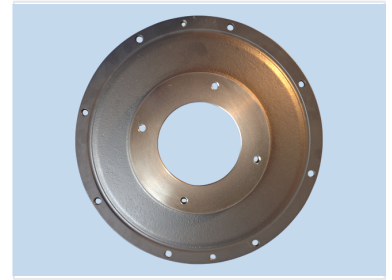
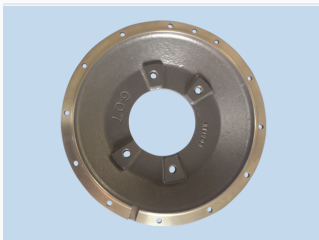


# Excavator Hydraulic Pump Cover

This cast iron pump cover is designed for excavator hydraulic systems. It features precision-machined mounting holes for secure attachment and a corrosion-resistant finish for extended lifespan.



## ADDITIONAL IMAGES



## Overview

### High-Performance Hydraulic Protection

This excavator hydraulic pump cover is engineered from durable cast iron to provide robust protection for critical hydraulic systems. Designed for demanding construction environments, it features a precision-machined circular design with a bronze-colored outer ring for enhanced sealing performance. The cover ensures reliable operation and extended component lifespan through its corrosion-resistant finish and secure mounting configuration.

## Technical Specifications

### Key Features

- Bronze-colored outer ring for enhanced sealing
- Multiple mounting holes for secure attachment
- Central opening for pump access
- Corrosion-resistant finish
- Precision-machined components

### Material

Cast Iron

### Traceability Identifiers

L09, K17203

## Application & Compatibility

### Compatible Machinery

Excavators • Hydraulic Systems

### Usage Environment

Demanding construction and heavy-duty excavator applications