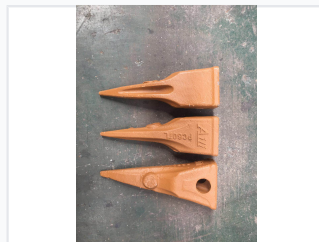


# Excavator Bucket Tooth for PC60 Excavators

Excavator teeth, also known as bucket teeth, are wear-resistant components attached to the bucket of an excavator. The PC60 RC and PC60TL teeth are specifically designed for PC60 excavator models.



## ADDITIONAL IMAGES



## Product Overview

### High-Performance Excavator Bucket Teeth

These excavator bucket teeth are precision-engineered wear components designed specifically for PC60 excavator models. Available in both RC (reinforced for rocky conditions) and TL (general-purpose digging) configurations, they ensure efficient material penetration and handling. Constructed from hardened steel alloys, these teeth are built to withstand high-impact forces and abrasive environments, extending the operational life of your bucket.

## Compatibility & Specifications

### Available Tooth Types

- RC (Reinforced for rocky conditions)
- TL (General purpose digging)

### Part Identifiers

PC60RC • PC60TL • 60ARC

### Compatible Machine Models

PC60

### Material Composition

Hardened steel alloy

## Application Details

### Primary Applications

- Soil excavation
- Rock breaking
- Sand handling
- General material loading