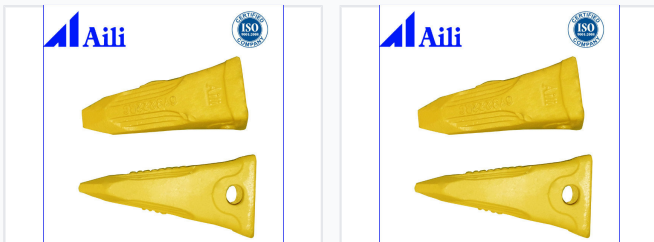


Excavator Bucket Tooth 6Y3222RCX

This excavator bucket tooth offers excellent wear resistance and very good mechanical properties. Its smooth surface ensures optimal performance.



ADDITIONAL IMAGES



Product Overview

High-Performance Excavator Tooth

The 6Y3222RCX (E307) excavator bucket tooth is engineered for superior digging performance and durability in demanding construction environments. Designed to withstand high-impact forces and abrasive conditions, this component ensures efficient material penetration and reduced downtime. Its robust construction provides excellent wear resistance, making it an essential part for reliable and productive earthmoving operations.

Technical Details

Model Number	6Y3222RCX
Alternate Designation	E307
Application	Excavator, Earthmoving Equipment, Construction Machinery

Quality Standards

Certifications
ISO 9001:2008