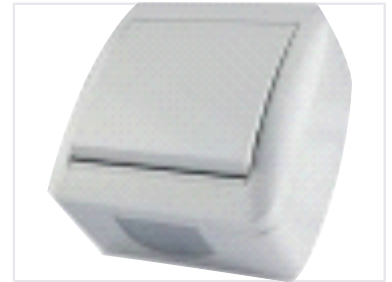
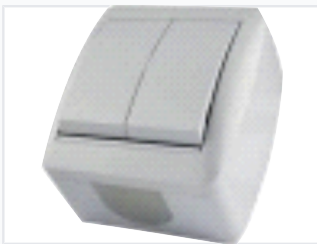


# European Surface Mount Wall Switch and Socket

This European-style surface-mounted wall switch and socket offers a reliable solution for power distribution. Its surface-mounted design simplifies installation, reducing costs and the need for recessed wiring.



## ADDITIONAL IMAGES



## Product Overview

### Professional Surface-Mounted Electrical Solution

This European-standard wall switch and socket unit is engineered for robust performance in residential, commercial, and industrial environments. Designed for simple surface-mounted installation, it eliminates the need for complex recessed wiring, significantly reducing setup time and labor costs. Its durable construction ensures a secure and stable electrical connection, providing a safe and efficient power distribution solution for modern interiors.

## Technical Specifications

### Standards Compliance

European Standard

### Suitable Environments

- Residential
- Commercial
- Industrial

### Mounting Style

Surface-mounted

### Integrated Components

Double switch, Standard socket