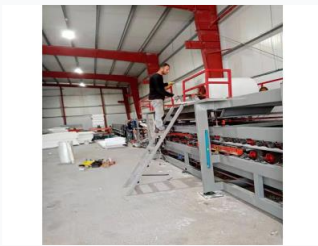


# EPS Rock Wool Sandwich Panel Production Line

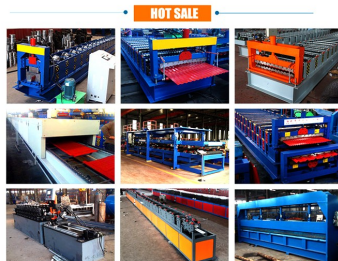
This automated line produces sandwich panels using EPS or rock wool as core material. It integrates decoiling, forming, laminating, cutting, and stacking processes for efficient production.



## ADDITIONAL IMAGES



## Overview



Our machines feature beautiful appearance, simple operation, reasonable price, good quality and so on.

A comprehensive view of the high-performance sandwich panel production line, highlighting the integrated metal forming and rolling mill technology.

### High-Efficiency Sandwich Panel Production Line

This automated production line is engineered for the continuous manufacturing of high-quality sandwich panels, utilizing materials such as EPS, rock wool, and glass silk floss. Designed for industrial roofing and wall cladding applications, the system integrates decoiling, precision roll forming, advanced lamination, and automated cutting into a single, cohesive workflow. With PLC-controlled operations and robust construction, this machine ensures consistent panel thickness, structural integrity, and thermal insulation performance for large-scale construction projects.

## Technical Specifications



Automated material feeding and control section designed for high output and consistent product quality.

### Production Speed

**2 m/min**

Minimum Speed

**4.5 m/min**

Maximum Speed

### Control System

PLC Control

### Compatible Core Materials

EPS, Rock Wool, Glass Silk Floss

### Plate Thickness

0.8 mm

### Core Thickness

20-300mm

### Total Power

30 KW

### Machine Weight

25 ton

### Dimensions (L x W x H)

35000 x 2500 x 2600 mm

## Production Workflow



The core formation stage, integrating profiling, core material feeding, and heating processes.



The final stages of production, featuring precise cutting mechanisms and automated stacking for efficient panel collection.

### Manufacturing Process

- Composite Decoiler
- Roll Forming
- Laminating System (Ribbon, Gelatinizing, Heating, Compounding)
- Crimping and Notching
- Edge Trimming
- Cutting System
- Runout Table