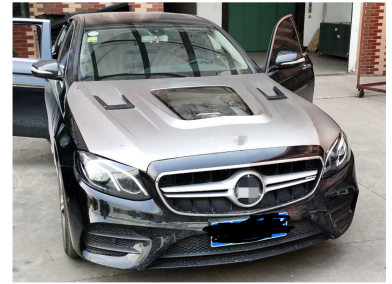
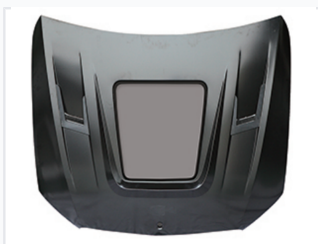


# Engine Hood for 2016+ Mercedes-Benz E-Class W213

This engine hood is compatible with Mercedes-Benz E-Class W213 vehicles manufactured from 2016 onwards. Constructed from robust materials, it offers impact and corrosion resistance while enhancing airflow for improved engine cooling.



## ADDITIONAL IMAGES



## Product Overview

### Premium Replacement Engine Hood

This high-quality aftermarket engine hood is precision-engineered for W213 chassis vehicles manufactured from 2016 onwards. Designed to meet or exceed OEM specifications, it offers a seamless fit and robust protection for the engine compartment. The construction utilizes durable materials that provide excellent resistance to impact and corrosion, ensuring long-term reliability and performance.

## Compatibility & Fitment

### Compatible Models

E-Class W213, 2016+

## Technical Features

### Key Design Features

- Aerodynamic profile for improved airflow
- Integrated engine cooling vents
- Central transparent engine bay viewing panel
- Smooth, paintable surface finish

### Material Performance

Impact Resistant • Corrosion Resistant • High Durability