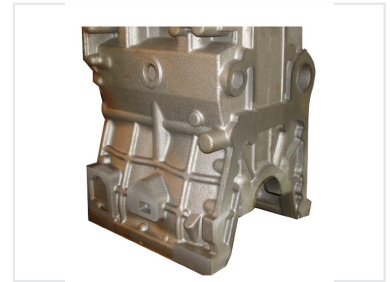


# Engine Cylinder Block Casting

This engine cylinder block casting forms the core structure of an internal combustion engine. It is typically made of cast iron or aluminum alloy and features mounting points, cooling passages, and structural ribs.



## Product Overview

### Precision Engineered Cylinder Block

This engine cylinder block casting is engineered for high-performance internal combustion engines. Featuring complex geometry with integrated structural ribs and cooling passages, it provides a robust foundation for engine assembly. The component is pre-machined on critical surfaces to ensure precise alignment for crankshaft bearings, cylinder liners, and coolant circulation systems.

## Technical Specifications

### Machining Status

Partially Machined • Ready for Assembly

### Material Composition

Cast Iron, Aluminum Alloy

## Key Features

### Design Characteristics

- Complex structural ribbing for rigidity
- Integrated coolant circulation passages
- Precision mounting points
- Crankshaft bearing provisions
- Cylinder liner housing