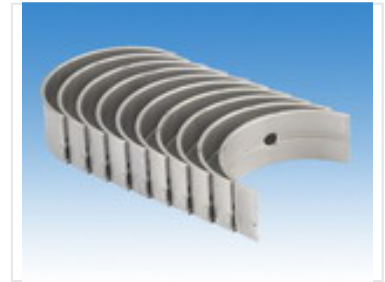


Engine Bearing Set

Engine bearings provide a low-friction surface for the crankshaft to rotate on. They are made of multi-layer material, including a steel backing, a layer of bearing material, and a thin overlay plating.



Product Overview

High-Performance Engine Bearing Set

This engine bearing set is precision-engineered for internal combustion engines, serving as a critical component for crankshaft and connecting rod assemblies. Designed to provide a low-friction interface, these bearings effectively reduce mechanical wear and ensure smooth, reliable engine operation under load. The multi-layer construction features a durable steel backing, high-grade bearing alloy, and specialized overlay plating to optimize conformability and longevity.

Technical Specifications

Design Features

- Oil lubrication grooves
- Precision lubrication holes
- Low-friction surface coating
- High-conformability plating

Construction Materials

Steel Backing, Aluminum Alloy, Copper Alloy, Overlay Plating

Performance Metrics

Key Performance Indicators

1 High

Wear Resistance

1 High

Conformability