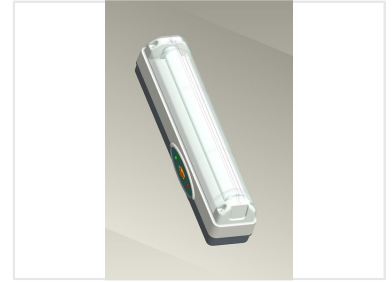


Emergency Light with 289-Degree Visibility

This emergency light is designed for reliable illumination during power outages or emergencies. It features a clear, protective cover over a bright fluorescent tube, providing wide-angle visibility of 289 degrees.



Product Overview

High-Visibility Emergency Lighting

The TK-2295 emergency light is engineered for critical illumination, providing an exceptional 289-degree beam angle to ensure maximum coverage during power outages. It is equipped with a 6V4Ah rechargeable sealed lead-acid battery and twin 9W PL tubes, offering reliable performance. Designed for versatility, this unit features both handle and wall-mount options, complemented by integrated overcharge and overdischarge protection for enhanced safety and durability.

Technical Specifications

Visibility Angle	289 degrees
Light Source	2 x 9W PL Tubes
Battery Type	6V4Ah Rechargeable Sealed Lead-Acid

Safety & Control

Status Indicators

- Green LED: Power Indicator
- Red LED: Charge Indicator

Protection Features	Overcharge Protection, Overdischarge Protection
---------------------	-------------------------------------------------

Logistics

Packaging & Shipping Details

Metric	Value
Quantity per Carton	10 pcs
Carton Dimensions	44.6 x 39.5 x 23.5 cm
Net Weight (Carton)	16.5 kg
Gross Weight (Carton)	17.5 kg
20ft Container Load	7,150 pcs