

# EM Security System for Bookstores and Libraries

This EM security system is designed for bookstores and libraries. It uses electromagnetic technology to detect security tags and prevent theft.



## ADDITIONAL IMAGES



## Overview

### ABSOLUTELY OUTSTANDING!

None lock with excellent anti-theft performance

EM SYSTEM



Modern aesthetic design with high-performance anti-theft detection.

### Application



Ideal for libraries, bookstores, and high-end retail environments.

### Advanced EM Security for Libraries & Retail

This electromagnetic (EM) security system provides a robust anti-theft solution specifically designed for bookstores and libraries. Featuring high sensitivity and a wide detection range, the system effectively prevents unauthorized removal of tagged items while maintaining a sleek, modern aesthetic. It is highly customizable and easy to integrate into existing retail or educational environments.

## Technical Specifications

### Available Colors

White

### Technology

EM (Electromagnetic)

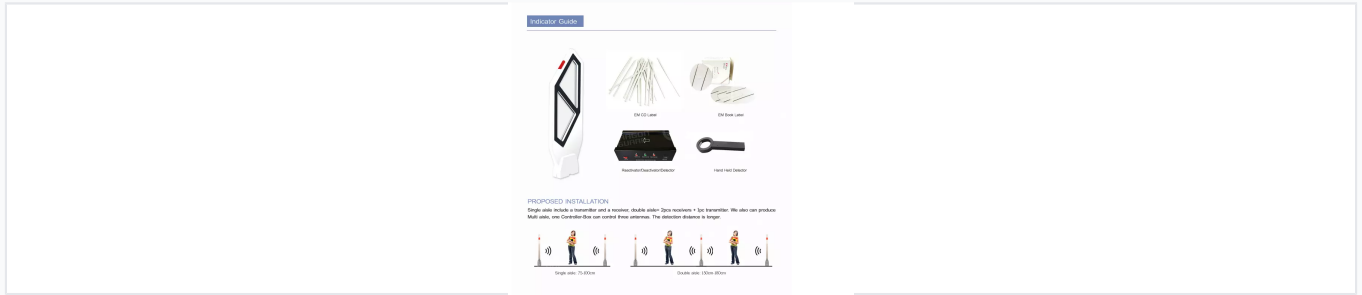
### Model Number

ES001

### Material

Advanced Resin-Glass + MDF

## Detection Performance



Flexible installation setups for single, double, or multi-aisle coverage.

### Detection Range

**100 cm**

Single Aisle Max

**180 cm**

Double Aisle Max

### Installation Options

- Single aisle: 1 Transmitter + 1 Receiver (75-100cm)
- Double aisle: 1 Transmitter + 2 Receivers (150-180cm)
- Multi-aisle: 1 Controller-Box manages up to 3 antennas

## Customization & Features



Various models available with optional people counter integration.

Full customization available for logos, colors, and frame materials.

### Optional Features

- Integrated People Counter
- Hand-held Detectors
- EM CD Labels
- EM Book Labels
- Reactivator/Deactivator Units

### Customizable Elements

Logo, Color, Shape, PCB Board, Alarm Light, Frame Material, Cable Length, Advertisement Panels

## Logistics & Compliance

### Packaging Details

| Component      | Weight (kg) | Dimensions (cm) |
|----------------|-------------|-----------------|
| System Unit    | 34          | 151 x 62 x 18   |
| Controller Box | 6.5         | 43 x 33 x 32    |

### Lead Time Table

| Quantity (Sets) | Est. Time (Days) |
|-----------------|------------------|
| 1 - 10          | 10               |
| 11 - 50         | 15               |
| > 50            | 0                |

### Certifications

CE, ISO, ROHS, SGS, MSDS