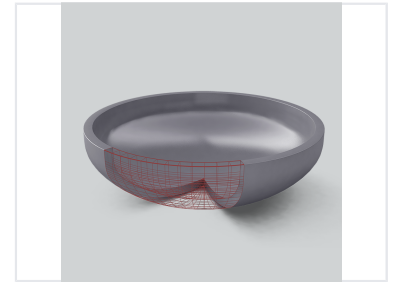


Ellipsoidal Pressure Vessel Head

Elliptical heads, also known as ellipsoidal heads, are pressure vessel heads used in tanks and boilers. Their shape provides a smooth transition, offering superior stress distribution for high-pressure applications.



Product Overview

Ellipsoidal Pressure Vessel Head

This ellipsoidal pressure vessel head is an essential component designed for high-pressure applications in tanks and boilers. Featuring a specialized elliptical shape, it provides superior stress distribution compared to hemispherical or torispherical alternatives, ensuring structural integrity. Engineered for demanding environments, this component offers excellent sealing capabilities and high resistance to corrosion, making it ideal for the petrochemical and environmental protection industries.

Application & Usage

Key Performance Benefits

Superior Stress Distribution • Excellent Sealing • Corrosion Resistance • High-Pressure Ready

Primary Industries

Petrochemical, Environmental Protection, Chemical Processing, Oil and Gas, Power Generation

Technical Specifications

Common Material Compatibility

- Carbon Steel
- Stainless Steel
- Specialized Alloys