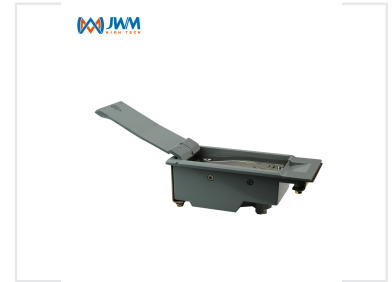


Electronic Lock for Substations

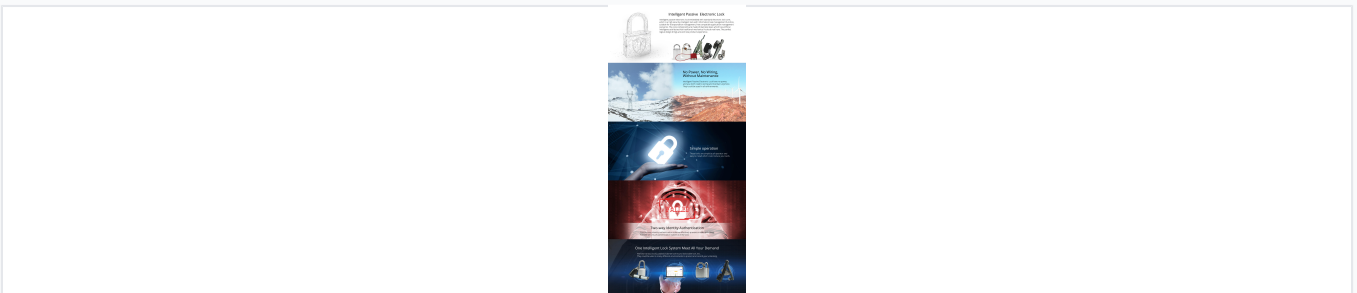
This intelligent lock core is designed for box-type substations. Its stainless steel lock beam offers high strength and IP68 protection, making it suitable for harsh environments with waterproof and dustproof needs.



ADDITIONAL IMAGES



Product Overview



Maintenance-free electronic lock system featuring two-way authentication and no-wiring installation.

Intelligent Passive Electronic Lock

This advanced electronic lock features a high-security core designed for demanding environments. It operates without external power or wiring, significantly reducing maintenance requirements while ensuring reliable performance. With two-way identity authentication and a robust, tamper-resistant construction, it provides a superior security solution for critical infrastructure and high-traffic access points.

Technical Specifications

Intelligent Passive Box-Type Substation Lock

Intelligent lock core is embedded in bronze substation lock. Stainless steel lock beam, high strength, protection level is IP68, suitable for harsh environment, waterproof and dustproof. It connects to operate electronically and is easy to manage.

WIM-2000B-XBS

Material: The locking beam is made of SUS304 stainless steel, the lock body is made of copper
Construction: Double bead double spring
Working Environment Temperature: 40°-20°C
Humidity: 20%-95%
Service life: 10 years
Protection level: IP68



Applications Scenarios

Suitable for large substation, drill proof, saw proof, knock proof, corrosion resistant.
Suitable for all types of bronze substation locks.



High-strength, IP68-rated passive lock designed for harsh environments and substation security.

Protection Level

IP68 • Waterproof • Dustproof

Body Material

Copper

Lock Beam Material

SUS304 Stainless Steel

Construction

Double bead double spring

Service Life

10 years

Environmental Conditions

Operating Environment

-40 °C

Min Temperature

70 °C

Max Temperature

97 %

Max Humidity

Security Features

Tamper Resistance

Drill proof, Saw proof, Knock proof, Corrosion resistant

Authentication

Two-way identity authentication

Compatibility

Available Lock Types

- Padlock
- Cabinet lock
- Round lock
- Cable lock