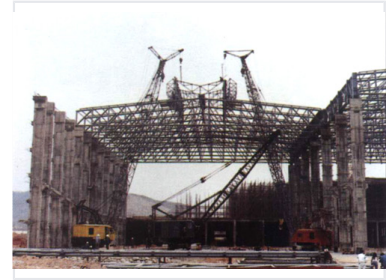


Electricity Meter

This meter accurately measures electricity usage. It is suitable for industrial, commercial, and residential applications to monitor energy consumption.



Overview

Industrial Electricity Meter

This electricity meter is designed for robust industrial applications, suitable for large-scale facilities such as power plants and heavy infrastructure projects. It provides reliable monitoring capabilities essential for managing substantial electrical loads and complex power networks. Engineered for durability, this device supports the critical infrastructure requirements of modern engineering environments.

Application

Primary Application	Industrial power infrastructure
Suitable Environments	Power Plants, Heavy Infrastructure, Industrial Facilities