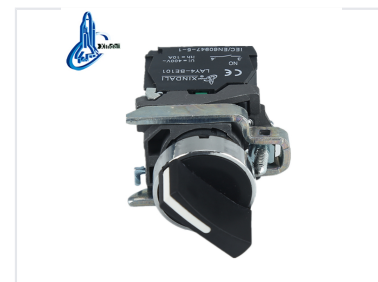


# Electrical Position Switch

This electrical position switch is used in controlling circuits of AC voltage up to 660V/AC50Hz or 60Hz and DC voltage below 400V. It is suitable for controlling signals and interlocking purposes.



## ADDITIONAL IMAGES

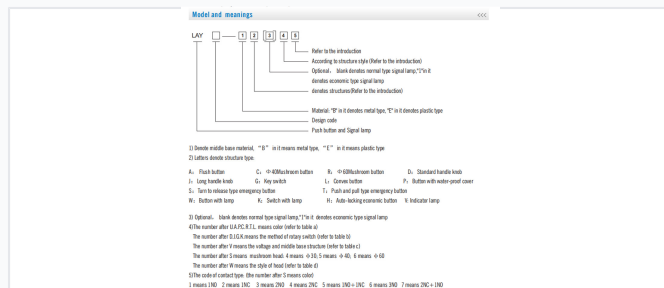


## Overview



Specializing in production of buttons and indicators since 1997

Robust construction designed for industrial control panels and machinery interfaces.



Model and configuration reference chart for identifying specific switch types and contact arrangements.

## Industrial Electrical Position Switch

This versatile electrical position switch is designed for reliable control circuit applications, supporting AC voltages up to 660V and DC voltages below 400V. Built with a durable zinc alloy and high-grade anti-flame plastic construction, it features silver alloy contacts to ensure superior resistance to electrical erosion. Compliant with international standards including IEC60947-5-1, this switch is an ideal solution for signal control, interlocking, and status indication in demanding industrial environments.



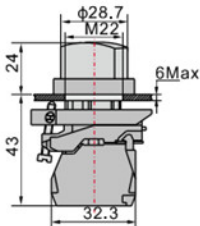
## Electrical Ratings

Rated Insulation Voltage	AC 600V (50Hz/60Hz)
Conventional Heating Current	10 A
Withstand Voltage	AC 2.5KV/min
Voltage Wave Tolerance	±20%

## Performance Metrics

Contact Resistance	d25 $\Omega$
Insulation Resistance	e5M $\Omega$
Signal Lamp Brightness	60 cd/m2
Continuous Working Life	100000 hours

## Durability

 <p>LAY4-BD25</p> <p>Standard Handle Selector Switch</p>		N/O	3	2-position stay put	LAY4-BD21		
		N/O	4	2-position spring return	LAY4-BD41		
		N/O+N/C	3	1	2-position stay put		LAY4-BD25
			4	2	2-position spring return		LAY4-BD45
		N/O+N/O	3	13	3-position stay put		LAY4-BD33
			4	14	3-position spring return		LAY4-BD53

Detailed dimensions and configuration options for selector switches, including mounting hole diameter and panel thickness compatibility.

### Mechanical Life

Component	Cycles
Pushbutton	1,000,000
Selector Switch	500,000

### Electrical Life

Component	Cycles
Pushbutton	5,000,000
Selector Switch	250,000

## Compliance

Certifications & Standards	CE, ISO 9001, RoHS, UL, IEC60947-5-1, GB/T14048.1
----------------------------	---