

Electric Ride-On Street Sweeper with Blower

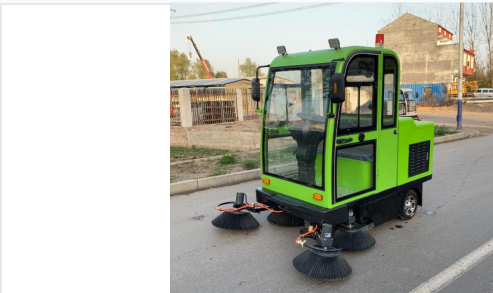
This electric street sweeper offers high working efficiency, cleaning up to 9800 square meters per hour. It features a thickened steel shell, dual disc brakes, LED spotlights, and a water spray system for dust control.



ADDITIONAL IMAGES



Overview



High-efficiency electric sweeper with integrated dust suppression technology.



Compact and maneuverable design suitable for urban and municipal applications.

High-Efficiency Electric Sweeper

This electric road sweeper is designed for maximum efficiency in urban and industrial environments, capable of cleaning up to 9800 square meters per hour. It features a robust thickened steel body with electrophoresis paint for long-term durability and is equipped with a water spray system to effectively suppress dust. The operator-friendly design includes a comfortable cabin, LED spotlights for night operations, and a high-capacity trash collection system.

Performance Metrics

Key Performance Metrics

9800 sqm/h

Work Efficiency

6 hours

Working Time

180 L

Trash Bin Capacity

12 km/h

Max Walking Speed

Technical Specifications

Mechanical and Electrical Data

Parameter	Value
Sweeping Width	1900mm
Main Brush Width	700mm
Power System	48V
Battery Capacity	48V 100A
Rolling Brush Motor	700W
Machine Weight	625kg
Dimensions (L*W*H)	1950*1850*1900mm

Features

Design Quality

Thickened Steel Shell • Electrophoresis Paint • Tempered Glass • LED Double Spotlight • Water Spray Dust Control

Safety & Operational Features

Dual Disc Brake, Anti-lock Brake System, Overload Protection, Constant Temperature Controller, On-board Parking System