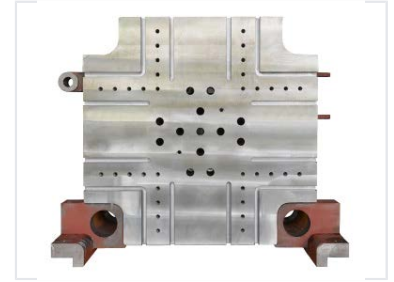
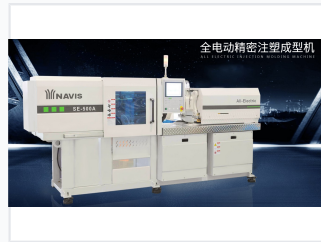


Electric Plastic Injection Molding Machine

This electric plastic injection molding machine features a rigid toggle structure and a high-efficiency lubrication system. The machine offers fast and smooth mold movement with a clamping servo motor connected to a ball screw for flexible operation.



ADDITIONAL IMAGES



Overview

Precision Electric Injection Molding

This all-electric injection molding machine is engineered for high-precision plastic part manufacturing, offering exceptional repeatability and energy efficiency. It features a high-rigidity five-point toggle clamping structure with a self-locking mechanism to ensure stability and extended service life. With Japanese-technology servo motors and high-torque ball screws, the machine provides fast, smooth mold movement and precise process control for complex geometries and tight tolerances.

Clamping System



Detailed view of the high-rigidity clamping structure and linear track support system.

Clamping System Features

- High-rigidity 5-pin toggle structure with self-locking mechanism
- Zero-resistance clamping guide with linear track support
- T-slot and screw fixation platen with embedded mold locating ring
- High-efficiency lubrication system with graphite alloy steel sleeves
- Flexible belt connection for servo motor to ball screw with 10-year warranty

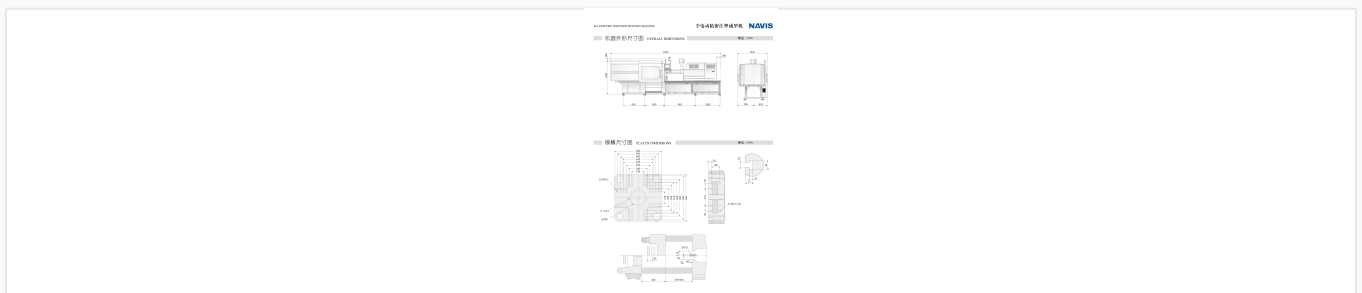
Key Clamping Metrics

900 kN
Clamp Tonnage

320 mm
Open Stroke

29.4 kN
Ejector Force

Technical Specifications



Technical layout illustrating machine dimensions and platen configuration.

Machine Specifications

Parameter	Value
Space Between Tie-bars (HxV)	460 x 410 mm
Platen Dimension (HxV)	630 x 605 mm
Mould Thickness	150 - 500 mm
Ejector Stroke	85 mm
Machine Weight	3.9 T
Screw Speed	400 rpm

Injection Unit

Injection Performance

- Injection Capacity: 40 - 147 cm³
- Injection Weight (PS): 36 - 134 g
- Injection Stroke: 105 - 130 mm
- Plasticizing Capacity (PS): 18 - 82 kg/h
- Heater Power: 4.184 - 6.44 kW

Control System

Controller Capabilities

User-friendly Interface, Rapid Process Control, Waveform Display, Advanced Production Management, Process Inspection