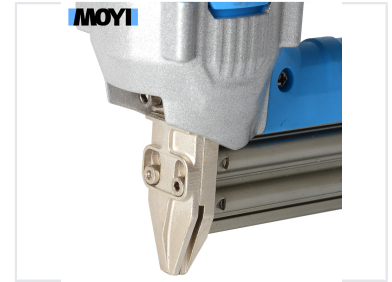


Electric Nailer for F30 Nails

This electric nailer is a versatile and powerful tool for various fastening applications. It features an adjustable depth setting for precise nail placement and is compatible with F30 nails.



ADDITIONAL IMAGES



Product Overview

Professional Grade Electric Nailer

This high-performance electric nailer is engineered for efficiency and precision in woodworking, upholstery, and general construction tasks. Featuring a robust 2300W all-copper motor and a durable aluminum alloy head shell, it delivers consistent power for demanding fastening applications. The tool includes an adjustable depth setting and a safety anti-self-locking switch, ensuring both accuracy and user protection during operation.

Technical Specifications

Power Output

2300 W
Power

15 A
Current

Supported Voltage	230-240V, 120V
Max Firing Speed	30 rpm
Magazine Capacity	100
Compatible Nail Size	10-30mm

Features

Key Features

- Full aluminum alloy head shell
- Safety anti-self-locking switch
- Integrated saving capacitor
- All copper motor
- Adjustable depth setting
- Ergonomic handle for reduced fatigue