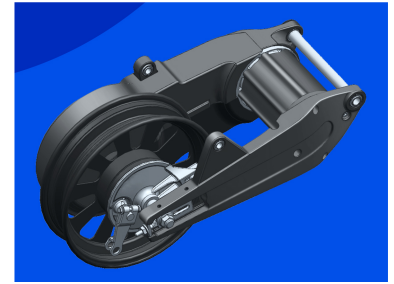
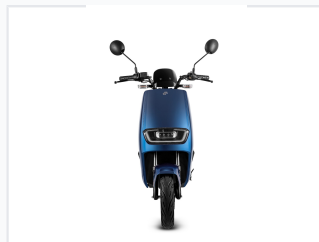


Electric Motorcycle ET2

The Electric Motorcycle ET2 is a modern electric motorcycle designed for urban commuting. It features a sleek design, integrated LED lighting, and a long-lasting battery for smooth and efficient rides.



ADDITIONAL IMAGES



Overview

Urban Mobility Redefined

The ET2 electric motorcycle is a modern, compact solution designed specifically for efficient urban commuting. Featuring a high-performance center motor and versatile battery options, it delivers a smooth, responsive ride with a top speed of 60km/h. With smart connectivity via a mobile app, this motorcycle combines eco-friendly transportation with the convenience of digital tracking and monitoring.

Performance

Motor Power

2000 W
Rated Power

18.5 N.m
Max Torque

Maximum Speed 60 km/h

Maximum Range 75 km

Battery & Power

Battery Options

- Lead acid: 72V 20Ah
- Lithium: 64V 20Ah
- Lithium: 64V 28Ah

Physical Dimensions

Vehicle Dimensions 1740 x 735 x 1100 mm

Features

Smart Features

Mobile App Connectivity, Digital Instrumentation, LED Lighting