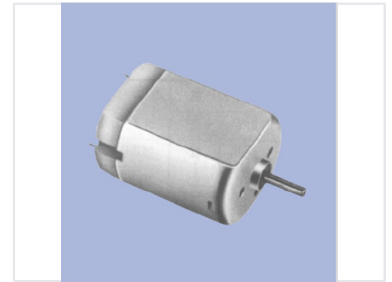


Electric Motor

This compact electric motor is designed for various applications. It is suited for use in small appliances, robotics, and other mechanical systems requiring rotary motion.



Overview

Compact Electric Motor

This compact electric motor is engineered for reliability and versatility in a variety of mechanical systems. Featuring a durable metal cylindrical housing, it is designed to provide consistent rotary motion for small appliances, robotics, and precision mechanical applications. The unit includes accessible electrical connections, ensuring straightforward integration into your existing projects.

Design & Construction

Housing Material	Durable metal
Form Factor	Cylindrical

Applications

Suitable Applications	Small Appliances, Robotics, Mechanical Systems, Rotary Motion
-----------------------	---