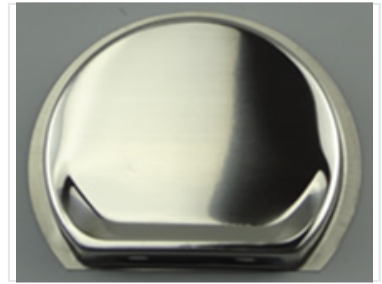


Electric Kettle Stainless Steel Body Component

Stainless steel kettle body component designed for electric water kettles. This part features a seamless construction, a spout with precision-engineered perforations, and mounting points for additional components.



ADDITIONAL IMAGES



Product Overview

High-Quality Kettle Components

This stainless steel body component is designed for the assembly of electric water kettles, offering a classic design suitable for CKD (Complete Knock Down) and SKD (Semi Knock Down) manufacturing processes. The component features a durable brushed finish that provides excellent corrosion resistance and heat management. Ideal for manufacturers looking for reliable, high-quality parts to streamline their production line.

Technical Specifications

Included Components

- Stainless steel body
- Heating plate
- Thermostat control set
- Internal wiring
- Plastic housing components

Material Finish	Brushed Stainless Steel
Assembly Compatibility	CKD, SKD

Key Features

Design Features

Classic Design • Seamless Construction • Heat Resistant • Corrosion Resistant

Logistics & Value

Commercial Benefits

0 Competitive

Pricing

0 Timely

Delivery