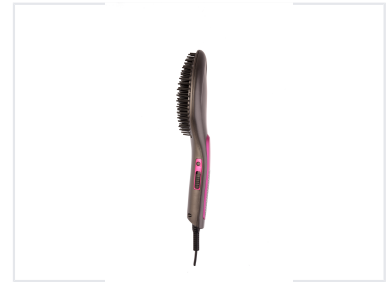


Electric Hair Straightening Brush

This electric brush is designed to straighten hair during brushing. It offers a convenient and efficient solution for personal hair styling.



Product Overview

Professional Hair Styling Solution

This electric hair straightening brush is designed for effortless and efficient styling, suitable for all hair types. Featuring advanced ceramic panel technology, it provides high-precision heat distribution that helps massage the scalp while straightening. With instant heat-up capabilities and an intuitive LCD display, this tool ensures a professional-grade experience with added safety features like auto shut-off protection.

Technical Specifications

Rated Voltage	220-240Vac
Frequency	50-60Hz
Power Consumption	75 W

Key Features

Design Highlights

- Ceramic panel technology
- 360° rotatable power cord
- LCD display interface
- Instant heat-up and recovery

Safety Features

Auto shut-off, Constant temperature control