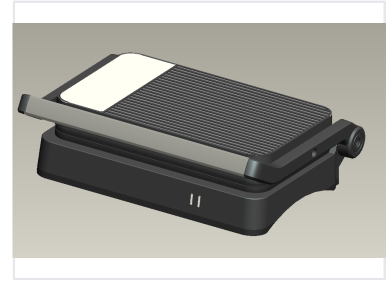


# Electric Contact Grill with Ribbed Surface

This electric contact grill features a ribbed cooking surface and non-stick coating. It is equipped with a hinged top plate and temperature control for even cooking.



## Product Overview

### Professional Contact Grill

This electric contact grill is designed for efficient food preparation, featuring a ribbed cooking surface that provides professional grill marks. Its robust hinged design ensures even pressure distribution, making it suitable for a variety of grilled dishes. Compact and sleek, this appliance is an ideal solution for commercial kitchens looking for reliable, consistent performance.

## Technical Details

Capacity	Two slices
Surface Type	Ribbed
Key Features	Hinged Design, Non-stick Coating, Temperature Control, Indicator Lights