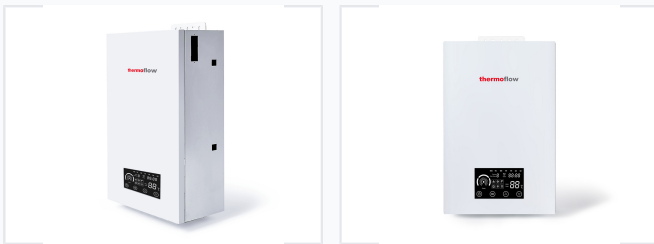


# Electric Combi Boiler for Heating and Hot Water

This electric combi boiler provides both central heating and hot water. It features two independent water heating systems for powering central heating and domestic hot water.



## ADDITIONAL IMAGES



## Product Overview

### High-Efficiency Electric Combi Boiler

This wall-mounted electric combi boiler provides a comprehensive solution for both residential heating and domestic hot water supply. Engineered for reliability, it features a rigid casing for protection, built-in pump, and advanced control systems including anti-freeze and heat preservation modes. With a compact design and intelligent scheduling, it offers an efficient alternative to traditional gas systems for modern installations.

## Key Features

### Core Functionalities

Dual Heating System, Anti-Freeze Mode, Heat Preservation Mode, Integrated Pump, Schedule Selection System, Digital Control Panel

## Technical Specifications

### Performance Metrics

<b>99 %</b> Efficiency	<b>5 L</b> Expansion Tank Capacity	<b>21 kg</b> Net Weight
---------------------------	---------------------------------------	----------------------------

### Operating Temperatures

- Radiator Mode: 35-80°C (Default: 65°C)
- Floor Heating Mode: 35-55°C (Default: 50°C)
- Domestic Hot Water (DHW): 35-60°C (Default: 38°C)
- Anti-freeze Start: <7°C
- Anti-freeze Stop: e10°C

<b>Dimensions</b>	602mm x 380mm x 195mm
<b>Connections</b>	G3/4" (Radiator/Floor Heating), G1/2" (DHW)

## Model Comparison

### Model Specifications

Model	Power (kW)	Voltage
Combi Solo 6	6	230V/400V
Combi Solo 9	9	230V/400V
Combi Solo 12	12	230V/400V
Combi Duo 15	15	400V
Combi Duo 18	18	400V
Combi Duo 21	21	400V
Combi Duo 24	24	400V