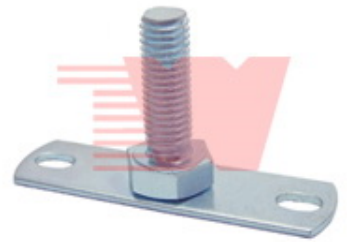


# Electric and Steam Iron

This appliance functions as both an electric iron and a steam iron. It is used to remove wrinkles from clothing using heat and steam.



## Product Overview

### Professional Ironing Components

This high-quality mounting assembly is engineered for durability and reliability in electric and steam iron applications. Featuring a robust metal bolt with coarse threading and a secure hexagonal head, it ensures stable fastening within the iron's internal structure. The precision-designed rectangular mounting plate, complete with rounded ends and dual mounting holes, facilitates straightforward installation and long-term component integrity.

## Technical Specifications

Component Type	Fastening Assembly
Fastener Design	Hexagonal head bolt with coarse threads
Mounting Plate	Rectangular with rounded ends and dual mounting holes
Compatibility	Electric Irons, Steam Irons, Industrial Appliances