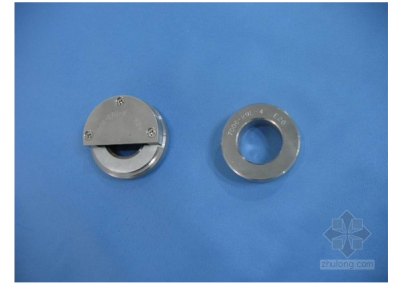


# E27 Lamp Cap Not Go Gauge

This not go gauge is designed for testing E27 lamp caps on finished lamps. It ensures the caps meet the required dimensional specifications.



## Product Overview

### Precision Quality Control for E27 Lamps

The E27 Lamp Cap Not Go Gauge is a precision-engineered tool designed for rigorous quality control in the manufacturing of lamps with E27 caps. Compliant with the IEC60061-3 reference standard, this gauge is essential for verifying that the minimum outside diameter of the screw thread meets specified dimensional requirements. By ensuring the centre contact does not project beyond surface 'X', it provides an accurate and reliable method for maintaining manufacturing standards.

## Technical Specifications

Gauge Type	E27 Lamp Cap Not Go Gauge
Model Number	7006-28A-1
Reference Standard	IEC60061-3

## Usage Instructions

### Testing Methodology

- Hold the lamp cap uppermost
- Place the gauge over the thread of the cap
- Verify the centre contact does not project beyond surface 'X'
- Use only the weight of the gauge itself for testing

Primary Purpose	To check the minimum outside (major) diameter of the screw thread (dimension 'd') of E27 caps on finished lamps.
-----------------	--