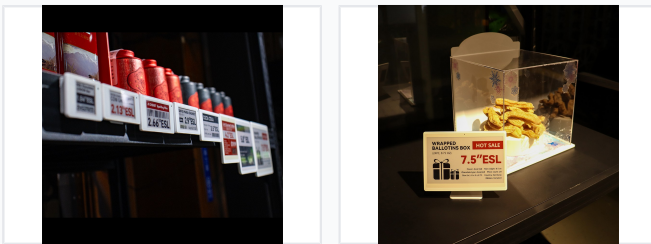


E-Ink Digital Price Tag Demo Kit

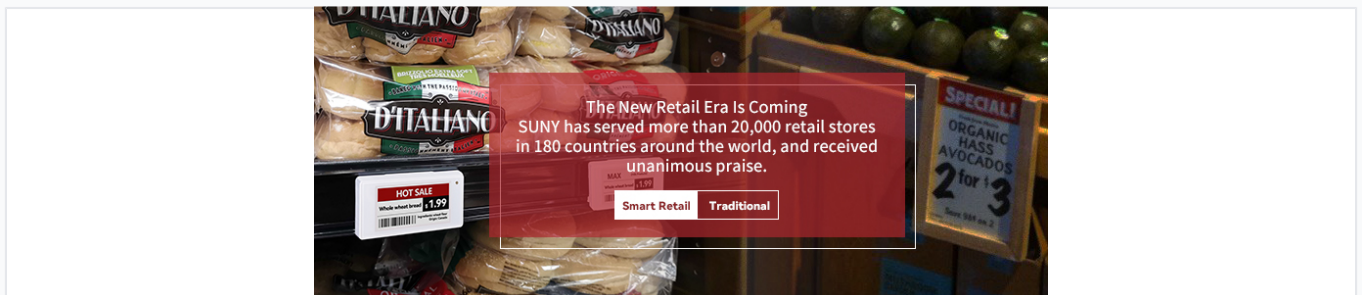
This E-ink digital price tag demo kit allows real-time updating of product prices. It improves operational efficiency and reduces labor costs in supermarket and retail environments.



ADDITIONAL IMAGES



Overview



Smart Retail Solution

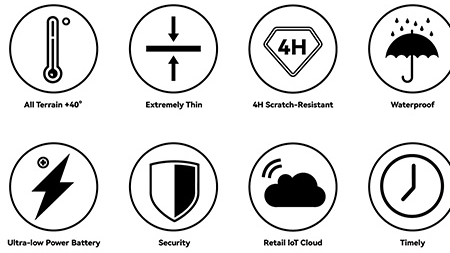
This E-Ink electronic shelf label (ESL) demo kit provides a comprehensive solution for modern retail environments, enabling real-time, wireless price and product information updates. By replacing traditional paper tags, this system helps retailers significantly reduce labor costs, minimize manual error rates, and improve overall operational efficiency. The integrated platform supports centralized management across multiple stores, ensuring synchronization and providing a scalable tool for inventory and pricing strategy.

Key Features

Operational Advantages

Real-time Updates, Reduced Labor Costs, Error Reduction, Paperless Efficiency, Multi-store Synchronization

Hardware & Construction



Build Quality

- 4H Hardness Acrylic Front Cover
- Laser-pressed Waterproof Housing
- Durable construction tested for 100,000+ scratches

Technical Specifications

Device Metrics

2.4 GHz

Communication Frequency

25 m

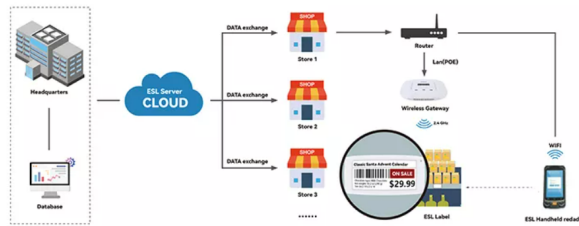
Transmission Radius

40 °C

Operating Temperature

System Compatibility

How Does ESL Work?



Software & Control

- Local and Cloud server versions available
- Visual template editor
- SDK provided for third-party software integration
- Centralized headquarters management capability

System Components

Electronic Shelf Label	AP & Software	Accessories
1x 1.54"ESL(B/W/R)	1x Base Station(2.4GHz)	1x 25cm Plastic Rail (Fits 1.54/2.13/2.9/4.2 sizes)
1x 2.13"ESL(B/W/R)	1x AC adapter	1x Plastic Clip (Fits 1.54/2.13/2.9 sizes)
1x 2.13"ESL(low (B/W/R)	1x Network Cable	1x T style Acrylic Clip(Fits 1.54/2.13/2.66/2.9/4.2sizes)
1x 2.66"ESL(B/W/R)	1x Demo Version Software	1x 4.2" Glass hanger
1x 2.9"ESL(B/W/R)	1x SDK	1x 4.2" Desktop holder
1x 4.2"ESL(B/W/R)	1x User(demo) manual	1x 4.2" Ice Insertion
1x 5.8"ESL(B/W/R)		1x 4.2" 360 degree Clip
		1x 5.8" desktop holder
		1x 5.8" plastic hanger

Included in Demo Kit

Component	Quantity/Type
E-Ink Tags	Multiple sizes (1.54" - 5.8")
Connectivity	Base Station & Gateway
Accessories	Rails, Clips, & Holders
Software	Demo Version & SDK