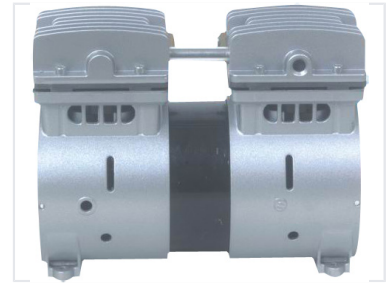


Dual-Cylinder Vacuum Pump for Industrial Applications

This dual-cylinder vacuum pump features cast aluminum heads and cylinders for efficient heat dissipation. Designed for continuous operation, it delivers high performance with minimal vibration and incorporates a direct-drive mechanism for enhanced reliability.



Overview

Industrial-Grade Vacuum Performance

This dual-cylinder vacuum pump is engineered for demanding industrial environments, providing high performance and continuous operational reliability. Its robust cast aluminum construction ensures effective heat dissipation, while the direct-drive mechanism minimizes maintenance needs. Designed to deliver low-vibration operation, this unit is an ideal solution for vacuum forming, laboratory equipment, and automated industrial workflows.

Technical Specifications

Body Material	Cast Aluminum
Drive Mechanism	Direct-drive

Performance Features

Key Operational Advantages

- Continuous operation capability
- Low vibration design
- Efficient heat dissipation
- Reduced maintenance requirements

Applications

Suitable Applications	Vacuum Forming, Laboratory Equipment, Industrial Automation
-----------------------	---