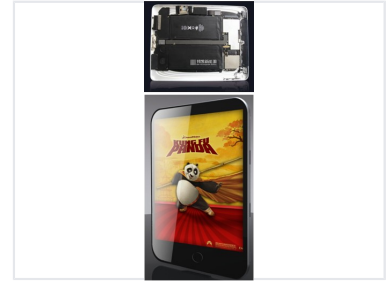


Dual-Cell Lithium-Ion Battery for Computers

This high-capacity lithium-ion battery is designed for flat computer devices. It features a dual-cell configuration, integrated protection circuitry, and durable construction for reliable power and extended usage.



Overview

High-Capacity Dual-Cell Power

This high-capacity lithium-ion battery is engineered specifically for flat computer devices that require reliable, long-lasting power. Featuring a dual-cell configuration, it includes integrated protection circuitry to ensure safety and stability during operation. Its durable construction makes it an ideal choice for both replacement needs and performance upgrades.

Technical Specifications

Battery Chemistry	Lithium-Ion
Configuration	Dual-Cell

Features

Safety Features	Integrated Protection Circuitry, Durable Construction, Rechargeable
-----------------	---

Usage

Primary Application	Flat computer devices
---------------------	-----------------------