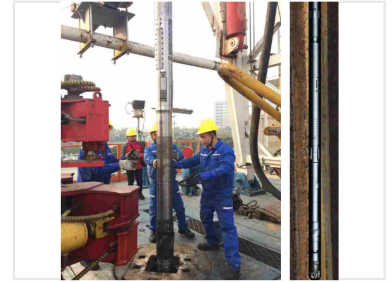


# Downhole Rotary Steerable Tool for Directional Drilling

This downhole tool is used in directional drilling to automatically control the direction and inclination of a wellbore. It enables precise steering and drilling of complex well paths, optimizing well placement and reservoir contact.



## Product Overview

### Advanced Rotary Steerable System

This electronically controlled external pointing rotary steerable system features independent intellectual property rights and advanced hydraulic control technology. Designed for complex drilling environments, the tool utilizes a simplified mechanical structure that significantly reduces energy consumption and operational costs. By offering a cost-effective alternative to traditional systems, it lowers the barrier for high-performance directional drilling in challenging horizontal and large displacement wells.

## Technical Specifications

### Operational Advantages

- Reduced number of electronic modules
- Independently-sealed compartments
- Simplified mechanical structure
- High efficiency performance
- Battery power supply capability

### Key Technical Features

Electronically Controlled, External Pointing, Oil Seal Technology, Contact Power Transmission, Hydraulic Control Self-Locking, Mud Hydraulic Drive

## Performance Metrics

### Economic Impact

**50 %**

Fabrication Cost Reduction

## Applications

### Recommended Drilling Operations

Directional Drilling • Large Displacement Wells • Horizontal Wells