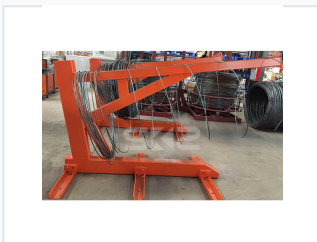


# Double Wire Straightening and Cutting Machine

This double wire straightening and cutting machine is designed for efficient and precise processing of metal wires. It features an automated system for straightening, cutting, and delivering wires to specified lengths.



## ADDITIONAL IMAGES



## Overview

### High-Efficiency Wire Processing

This double wire straightening and cutting machine integrates two essential functions into a single, high-performance unit. Designed for industrial efficiency, it handles low-carbon wire rods with precision, allowing for the simultaneous processing of two wires to maximize throughput. With automated length measurement and robust construction, it minimizes auxiliary labor while ensuring consistent, high-quality output for demanding production environments.

## Technical Specifications

### Max Straightening Speed

**130 m/min**

Max Speed

### Precision Standards

Parameter	Tolerance
Linearity of straightening	$d \pm 2\text{nm/m}$
Tolerance of cut-to-length	$d \pm 5\text{nm}$

Capacity (Single Wire)	6 – 10 mm
Capacity (Double Wire)	6 – 8 mm
Cutting Length Range	50 – 12,000 mm

## Operational Details

Power Consumption	6 Kw/h
Machine Weight	4 tons
Dimensions (L*W*H)	22 * 3.4 * 2 m

## Key Features

### Key Features

- Integrated straightening and cutting functions
- Simultaneous dual-wire processing
- Automated length measurement
- Customizable receiving rack length
- Barrel-type feeding rack for improved efficiency

## Certifications

Compliance	CE, ISO
------------	---------