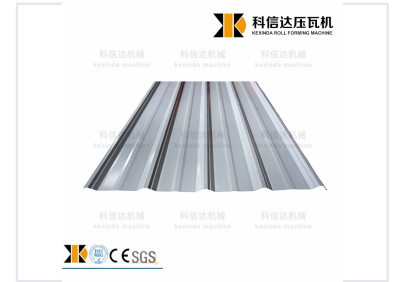
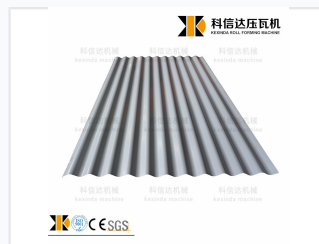
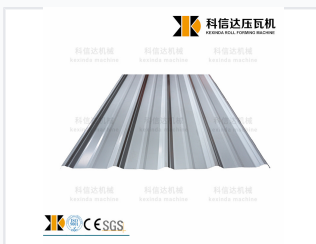


Double Layer Metal Sheet Roll Forming Machine

This roll forming machine produces double-layer metal sheets for roofing and wall panels. It features robust construction and advanced control systems for reliable performance.



ADDITIONAL IMAGES



Overview



High-Efficiency Double Layer Forming

This double layer metal sheet roll forming machine is engineered for the simultaneous or alternative production of two different profiles, significantly increasing manufacturing versatility and space efficiency. Designed for the construction industry, it excels at producing high-quality roofing sheets and wall panels from various metal substrates. The robust construction combined with advanced automated controls ensures consistent dimensional accuracy and high productivity for B2B operations.

Technical Performance

Performance Highlights

12 m/min
Max Speed

0.8 mm
Max Thickness

1250 mm
Max Feeding Width

Material Specifications

Compatible Materials	Color Steel Plate, Galvanized Sheet, Aluminum Coils
Material Thickness Range	0.3 - 0.8 mm
Feeding Material Width	914 - 1250 mm

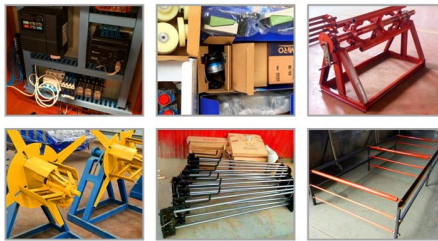
Machine Construction



Roller Stations	11-18 rows (customizable to requirements)
Roller Material	45# Steel
Shaft Diameter	80 mm
Main Frame Wall Thickness	12-18mm steel plate

Electrical & Control

Spare part pictures:

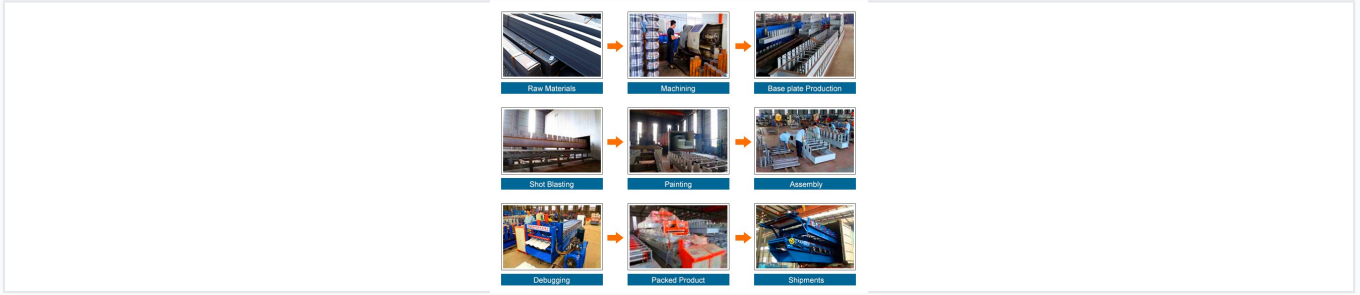


Control System

- Automated PLC control
- Variable frequency drives
- Precision cutting mechanism
- User-friendly interface

Power Supply	380V 50Hz 3-Phase
--------------	-------------------

Manufacturing Process



Quality Control Workflow

- Raw material preparation
- Precision machining of rollers and shafts
- Base plate production and shot blasting
- Electrostatic spraying/painting
- Component assembly
- System debugging and testing
- Final packing and shipment

Service & Support

Compliance & Quality

CE • ISO 9001 • CQC

Warranty Period

1 Year