

Double Layer Metal Roofing Sheet Roll Forming Machine

This machine produces double layer corrugated metal roofing sheets. It is designed for manufacturing IBR (Inverted Box Rib) roofing panels.



ADDITIONAL IMAGES



Product Overview



High-Efficiency Double Layer Roll Forming

This double-layer metal roofing sheet machine is engineered for high-volume production of both corrugated and IBR roofing panels. Its dual-tier design allows for the simultaneous forming of two different profiles, significantly increasing operational efficiency and saving workshop space. Built with a robust steel frame and precision-engineered rollers, it ensures consistent, weather-resistant panel quality for diverse construction needs.

Technical Performance



Production Speed

12 m/min
Max Speed

Roller Stations

11-18 rows (customizable)

Material Specifications



Compatible Materials

Color steel plate, Galvanized sheet, Aluminum coils

Feeding Material Width

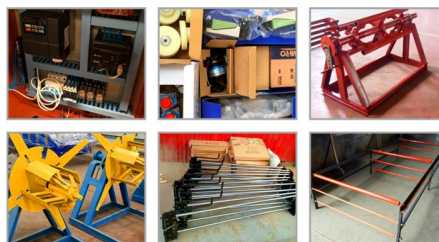
914-1250mm

Material Thickness Range

0.3-0.8mm

Component Details

Spare part pictures:



Cutting System

- Blade Material: Cr12Mov with quenched treatment
- Drive: Hydraulic system
- Control: PLC computer integration

Roller Material

High grade No.45 forged steel

Shaft Diameter

80 mm

Control & Automation



Control Cabinet Features

- Programmable profile length and quantity
- Automatic and manual operation modes
- Multi-language support (English, Chinese, Spanish, Russian)

Hydraulic & Power

Hydraulic System Parameters

Parameter	Value
Motor Power	4kW
Working Pressure	12-16Mpa (Adjustable)
Oil Type	46# Hydraulic Oil

Uncoiler Specifications

Manual Uncoiler Specs

- Loading Capacity: 5T
- Inner Diameter: 500-508mm
- Max Outer Diameter: 1250mm
- Main Motor: 5.5KW AC

Compliance & Quality

Quality Standards

CE • ISO 9001 • Alibaba Assessed Supplier

Service & Warranty

Warranty	1 year
----------	--------