

# Double Layer Corrugated and IBR Roofing Sheet Roll Forming Machine

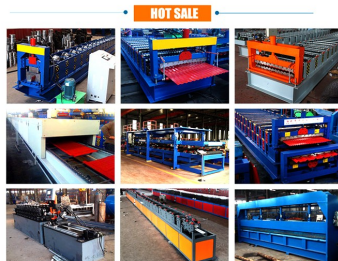
This machine produces double layer corrugated metal roofing sheets and IBR panels. It is designed for efficient, high-volume production.



## ADDITIONAL IMAGES



## Product Overview



Our machines feature beautiful appearance, simple operation, reasonable price, good quality and so on.

Engineered for high-volume production of IBR and corrugated metal sheets.

### High-Efficiency Double Layer Roofing Solution

This industrial-grade roll forming machine features a double-layer configuration designed to produce both corrugated metal roofing sheets and IBR (Inverted Box Rib) panels. Engineered for high-volume production, it combines robust construction with precision forming to ensure consistent dimensional accuracy across various metal gauges. The integrated hydraulic system and PLC control provide a reliable, automated solution for manufacturing durable, weather-resistant roofing materials.

## Technical Performance

### Key Performance Metrics

**12 m/min**

Max Speed

**5 T**

Loading Capacity

**0.8 mm**

Max Thickness

## Material Specifications

|                            |   |
|----------------------------|---|
| Compatible Materials       | Color steel plate, Galvanized sheet, Aluminum coils |
| Feeding Material Width     | 914-1250mm  |
| Feeding Material Thickness | 0.3-0.8mm   |

## Forming System



Heavy-duty blue and yellow frame construction showing the roller series for dual-profile production.

|                 |                                |
|-----------------|--------------------------------|
| Roller Stations | 11-18 rows (customizable)      |
| Roller Material | High grade No. 45 forged steel |
| Shaft Diameter  | 80 mm                          |

## Control & Automation



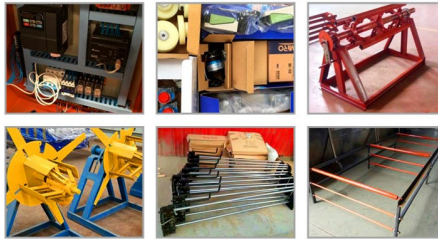
The integrated orange control panel allows for precise automation of the forming and cutting process.

### Control System

- PLC Computer Control Cabinet
- Automatic and Manual modes
- Programmable length and quantity settings
- Multi-language support: English, Chinese, Spanish, Russian

## Hydraulic & Cutting System

Spare part pictures:



Precision-engineered spare parts ensure long-term maintenance and consistent performance.

|                        |                                 |
|------------------------|---------------------------------|
| Cutting Blade Material | Cr12Mov with quenched treatment |
| Hydraulic Motor Power  | 4 kW                            |
| Working Pressure       | 12-16Mpa (adjustable)           |

## Uncoiler Specifications

### Manual Uncoiler Parameters

| Parameter            | Value          |
|----------------------|----------------|
| Inner Diameter       | 500-508mm      |
| Max Outer Diameter   | 1250mm         |
| Max Steel Coil Width | 1300mm         |
| Main Motor Power     | 5.5KW AC motor |

## Quality & Compliance

### Certifications

CE • ISO 9001 • Alibaba.com Assessed

|                 |        |
|-----------------|--------|
| Warranty Period | 1 year |
|-----------------|--------|