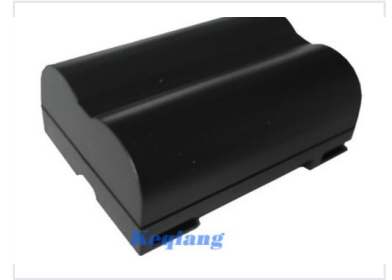


Digital Camera Rechargeable Battery

This rechargeable lithium-ion battery is designed for use in digital cameras. It provides reliable power for extended shooting sessions.



Overview

High-Performance Digital Camera Power

This rechargeable lithium-ion battery is engineered to provide reliable, consistent power for your digital camera, ensuring you are ready for extended shooting sessions. With a compact and portable design, it offers high energy density for long-lasting performance and minimal self-discharge. Built-in safety features protect against overcharging, overheating, and short circuits for safe and dependable operation.

Technical Specifications

Battery Chemistry

Li-ion

Performance Metrics

7.4 V

Voltage

1400 mAh

Capacity

Item Number

K-BLM1

Safety & Features

Safety Protections

- Overcharge protection
- Overheat protection
- Short circuit protection