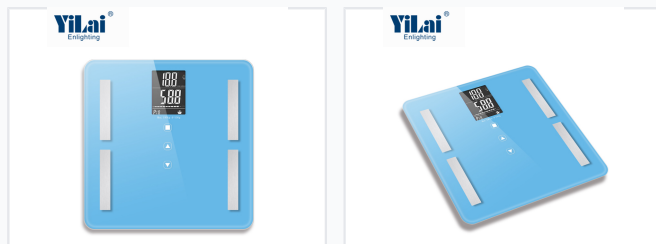


Digital Body Composition Scale with Bluetooth

This digital scale measures weight, body fat percentage, and other key body composition metrics. It supports Bluetooth connectivity for syncing data with smartphone apps and features multi-user memory.



ADDITIONAL IMAGES



Overview

Comprehensive Health Monitoring

This Digital Body Composition Scale is a versatile fitness partner designed to provide a complete overview of your health. Utilizing advanced BIA biometric technology and four high-precision sensors, it accurately measures weight, BMI, body fat, muscle mass, and more. With support for up to 10 user profiles and a clear multi-screen LCD, it is an ideal solution for families and health-conscious individuals tracking long-term progress.

Key Metrics

Featured Health Metrics

180 kg

Max Capacity

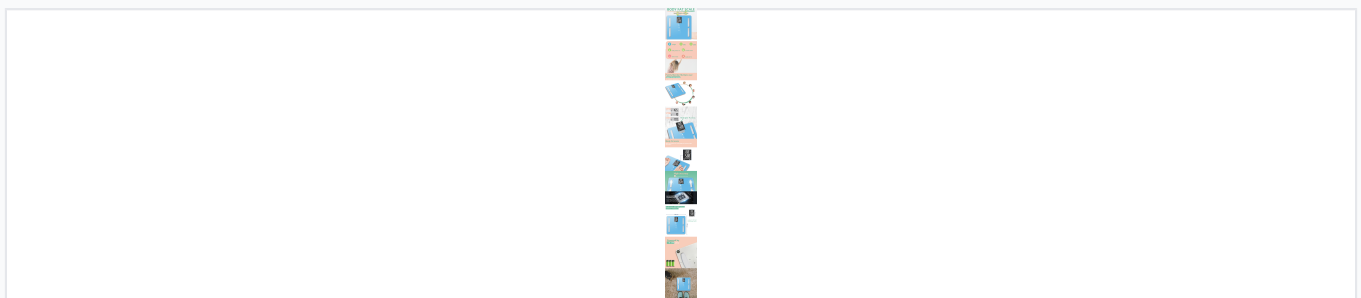
100 g

Graduation

10 Profiles

User Memory

Measurement Capabilities



Comprehensive health tracking including BMI, BMR, and body fat percentage using BIA technology.

Tracked Parameters	Weight, BMI, BMR, Body Fat %, Body Water %, Muscle Mass, Bone Mass
Measurement Method	BIA (Bioelectrical Impedance Analysis) biometric technology

Technical Specifications

Scale Dimensions	250 x 250 x 21 mm
LCD Display Size	65 x 50 mm
Sensor Technology	High strain gauge sensor system with 4 high-precision sensors
Power Supply	3 x AAA batteries

Features & Connectivity

Connectivity

Bluetooth

User Profile Settings

- Height adjustment
- Age selection
- Gender selection
- Individual progress tracking

Design & Safety

Materials

- Tempered glass platform
- Stainless steel electrode pads
- Non-slip feet