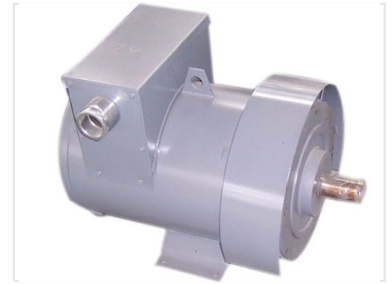


Diesel Power Generator

This diesel generator is engineered for reliable power generation in industrial, commercial, and residential settings. It features efficient fuel consumption and durable construction for long-lasting performance.



Overview

Robust Diesel Power Generation

This diesel generator is engineered for reliable and consistent power performance across industrial, commercial, and residential applications. Featuring a durable construction with a sturdy base for vibration dampening, it ensures stability and longevity in demanding environments. The system integrates a high-efficiency diesel engine and a precision alternator, managed by a user-friendly control panel for optimal power output monitoring.

Technical Specifications

Key Components

- Diesel Engine
- Alternator
- Control Panel
- Vibration Dampening Base

Application Suitability

Industrial, Commercial, Residential

Performance

Performance Metrics

1 High

Fuel Efficiency