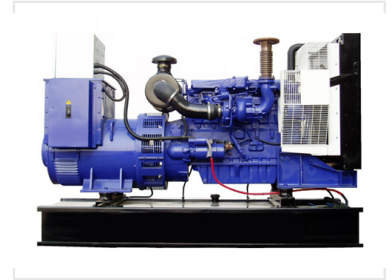


Diesel Generator Set

This diesel generator set has a rated speed of 1500rpm and features a four-stroke, water-cooled engine with a turbocharger. Compliant with ISO3046 standards, it offers a compact design, high power, reliability, and low installation and maintenance costs for long cycle operation.



Product Overview

High-Performance Diesel Generator Set

This diesel generator set is engineered for reliability, featuring an advanced control system and an optimized dynamic damping design for superior operational stability. It is built to be environmentally conscious, offering energy-saving performance with low emissions and reduced noise levels through a customized muffler exhaust system. Designed for longevity and efficiency, this unit provides consistent power output with low fuel and oil consumption rates.

Performance & Efficiency

Key Features

- Optimized dynamic damping system
- Low-noise muffler exhaust system
- Low fuel and oil consumption
- Low emission output
- High operational stability

Operational Metrics

1 Low

Vibration Level

1 Low

Noise Level

Technical Specifications

Core Components

Advanced Control System, Damping System, Customized Muffler

Applications

Suitable Applications

Prime Power • Standby Power • Emergency Power