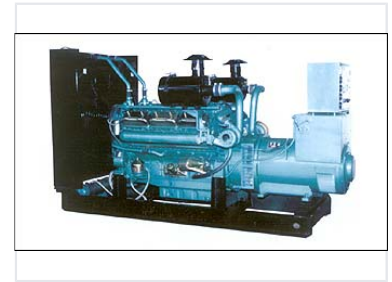


# Diesel Generator Set

This diesel generator set is engineered for dependable power generation across diverse applications. It combines a robust diesel engine with a high-efficiency alternator to deliver consistent electrical output.



## Overview

### Robust Power Generation

The QD20GF is a high-performance diesel generator set engineered for consistent and reliable power output. Designed for both prime and standby applications, it combines a heavy-duty engine with an efficient alternator to ensure stability. This unit includes advanced monitoring and comprehensive safety protections, making it a dependable solution for industrial, commercial, and residential energy requirements.

## Performance

### Suitable Applications

- Prime power
- Standby power
- Emergency power

### Key Operational Features

Automatic Voltage Regulation, Low Oil Pressure Shutdown, Overload Protection

## Technical Details

### Design Advantages

Rugged Construction • Easy Maintenance • Long Service Life