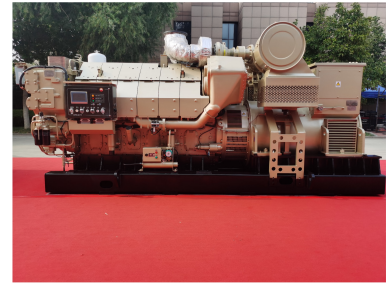


Diesel Engine and Generator Set

The 12V175 diesel engine features high supercharging, low energy consumption, and high reliability. Designed for electric drilling, it includes a remote monitoring system for real-time data recording and remote monitoring.



Overview

High-Performance Power Generation

This diesel engine and generator set is engineered for reliable, continuous power supply in demanding industrial environments. The system combines a robust, durable engine with a high-efficiency generator to ensure stable performance. Equipped with an advanced control panel, it allows for precise monitoring and management of engine operations to maintain safety and optimal output.

Technical Specifications

Model Identification	3506J-JC379
Application Suitability	Continuous Operation, Demanding Environments, Industrial Power

Key Features

System Highlights

- Durable engine construction
- High-efficiency generator coupling
- Advanced performance monitoring control panel
- Rugged design for reliability