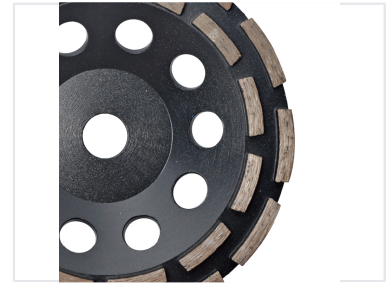


# Diamond Cup Grinding Wheel for Concrete Stone

This diamond cup grinding wheel is designed for aggressive material removal. It features a durable steel body with diamond segments for optimal grinding performance on concrete, stone, and masonry materials.



## ADDITIONAL IMAGES



## Product Overview

### Professional Diamond Grinding Solutions

This professional-grade diamond cup wheel features a robust dual-row segment design engineered for high-performance material removal. Built with heat-treated steel bodies, it offers exceptional durability and extended service life when grinding granite, marble, concrete, and masonry. Integrated venting holes facilitate efficient cooling for both wet and dry applications, ensuring consistent results during intensive surface preparation.

## Technical Specifications

Segment Configuration	Dual Row
Cooling Mechanism	Yes
Application Compatibility	Granite, Marble, Concrete, Masonry

## Logistics and Packaging

### Available Packaging

- Double blister
- Plastic hanger with label
- Cardsleeve
- Color box