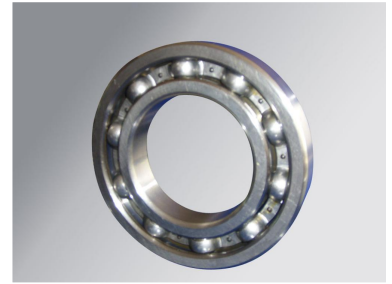


Deep Groove Ball Bearing 6303

This single-row deep groove ball bearing features solid outer and inner rings with ball and cage assemblies. The bearing is designed to handle both axial loads in both directions and radial loads.



Product Overview

High-Performance Deep Groove Ball Bearing 6303

The 6303 deep groove ball bearing is designed for high efficiency and versatility, supporting both radial and moderate axial loads with low friction coefficients. Engineered for precision and longevity, it is suitable for demanding applications ranging from high-speed electric motors to automotive components. Its robust construction ensures high limiting speeds and reliable performance in various industrial settings.

Technical Specifications

Tolerance Standards

ABEC-1 (P0) • ABEC-3 (P6)

Noise Levels

- EMQ V1 Z2
- EMQ V2 Z3
- EMQ V3 Z4
- EMQ V4

Available Closure Designs

- Open
- Z
- ZZ
- RZ
- 2RZ
- RS
- 2RS

Material

GCR15, GCR12

Logistics and Packaging

Typical Lead Time

35 days

Maximum Delivery Days

Export Packaging

Color Box, Plastic Tube, Carton Box, Pallet