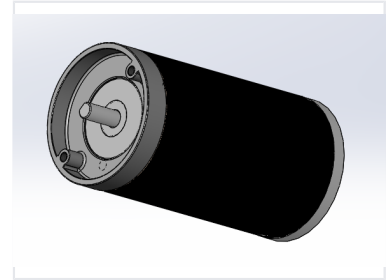


# DC Motor for Water Pump

This DC motor is designed for water pump applications. It operates with low noise and offers a long operational life.



## ADDITIONAL IMAGES



## Overview

### Professional Grade DC Water Pump Motor

This 230V DC motor is precision-engineered to provide optimal speed and torque for water pumping applications. Designed for reliability, it features low-noise operation and an extended service life suitable for demanding environments like water filters and purifiers. The unit offers a versatile engineering platform for rapid customization to meet specific project requirements.

## Performance Metrics

### Performance Data

**230 V**

Voltage

**180 mN.m**

Torque

**38 W**

Power

**2000 RPM**

Speed

## Technical Details

Model Number

PT4850230

## Key Features

Key Benefits

Long Life, Low Noise, Customizable