

DC Inverter Air Source EVI Heat Pump

This DC inverter air source EVI heat pump provides efficient heating and cooling. Its enhanced vapor injection technology ensures reliable performance in diverse climates.



ADDITIONAL IMAGES



Product Overview

Advanced EVI DC Inverter Heat Pump

This high-efficiency air source heat pump utilizes Enhanced Vapor Injection (EVI) technology to deliver reliable performance in extreme climates, operating effectively at ambient temperatures as low as -35°C . Designed for versatility, the system provides comprehensive solutions for residential and commercial space heating, cooling, and domestic hot water production. With advanced DC inverter technology and intelligent heating curve control, the unit optimizes energy consumption, offering significant efficiency gains over standard non-inverter systems.

Performance Metrics



EVI technology allows for stable operation and rated heating capacity even at ambient temperatures down to -15°C .

Featured Performance

-35°C

Min. Operating Temp

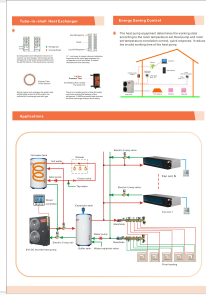
30 %

Energy Savings

53 dB(A)

Min. Sound Level

Technical Specifications



The counter-current tube-in-shell heat exchanger design maximizes heat exchange efficiency and prevents refrigerant leakage.

Ingress Protection

IPX4

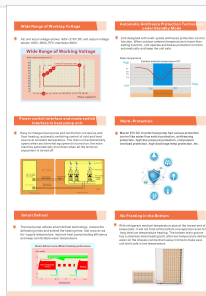
Power Supply

- 220V/1Ph/50(60)Hz
- 380V/3Ph/50(60)Hz

Refrigerant

R410A, R32

Safety & Protection



Comprehensive safety systems, including smart defrost and multi-grade antifreeze protection, ensure reliable operation in harsh conditions.

Safety Systems

- High/Low pressure protection
- Compressor overload protection
- Water flow switch protection
- Anti-freeze protection
- High discharge temperature protection
- Power loss protection

Performance Data

Capacity Overview (Representative Models)

Model	Cooling (kW)	Heating (kW)	COP (+7°C/+35°C)
09ZA	7.5	9	4.21
15ZA	12.5	15	4.13
20ZA	16	20	4.12
36ZA	30	36	4.11

Certifications

Standards & Compliance

CE, ETL, EN14511