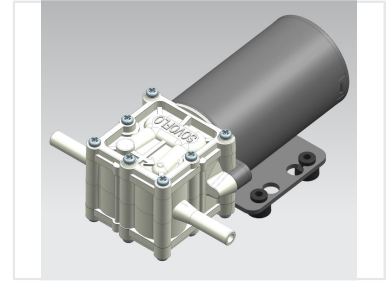
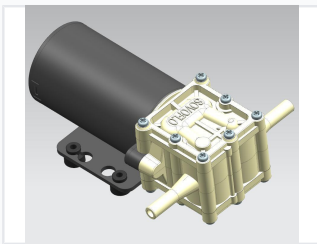


DC 12/24V Diaphragm Pump for Water Dispenser

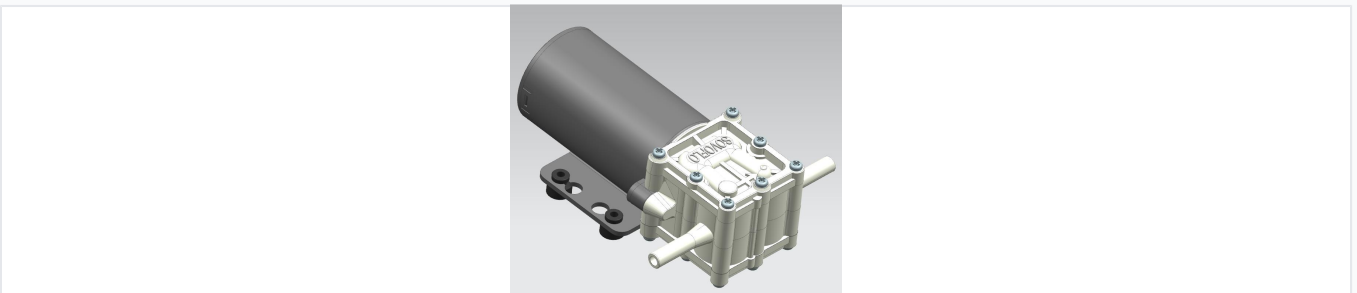
This DC diaphragm pump is designed for dispensing both cold and hot water in various applications. It features food-grade construction and a compact size for easy installation.



ADDITIONAL IMAGES



Overview



Food grade DC diaphragm pump for high-reliability water dispensing systems.

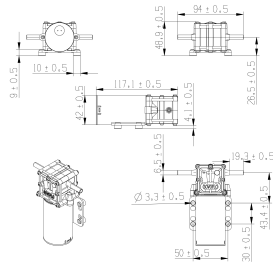
High-Performance DC Diaphragm Pump

The KDP-14 series is a versatile, food-grade diaphragm pump designed for reliable water handling in beverage and vending equipment. Featuring a permanent magnet DC motor, it offers self-priming capabilities and the ability to run dry without damage. Its robust, explosion-proof design ensures safe and efficient operation with both cold and hot water up to 100°C.

Key Features

Food Grade, Self-priming, Dry Run Safe, Low Noise, Explosion Proof

Technical Specifications



Detailed dimensions for integration into vending and dispensing systems.

Electrical Ratings

12 VDC

Rated Voltage (Option 1)

24 VDC

Rated Voltage (Option 2)

Operational Performance

Metric	Value/Range
Flow Rate	0.8 - 1.5 L/min
Dry Suction	1 - 10 m
Noise Level	43 - 50 dB
Max Pressure	0.08 - 0.3 MPa
Fluid Temp	0 - 100 °C

Applications

Suitable Applications

- Water Dispenser
- Coffee Machine
- Vending Machine
- Ice Maker
- Tea table water dispensing
- Medical equipment
- Chemical instrument
- Electric sprayer