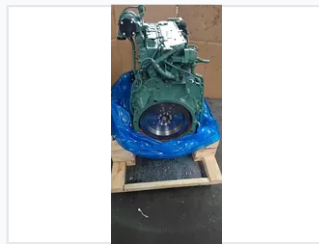


# D6E Water-Cooled Diesel Engine

The D6E is a water-cooled diesel engine known for its compact size and light weight. It features broad adaptability, performing reliably in diverse conditions and applications including machinery, vehicles, and power generation.



## ADDITIONAL IMAGES



## Overview

### D6E Diesel Engine Performance

The D6E is a robust, water-cooled diesel engine engineered for versatility and reliability across demanding environments. Its compact, lightweight design ensures ease of maintenance and efficient operation, while advanced features like turbocharging enhance both power output and fuel economy. Built to withstand extreme conditions, this engine provides consistent performance in high altitudes, hot or cold climates, and areas with variable water quality.

## Technical Specifications

Cooling System	Water-cooled
Engine Configuration	Inline six-cylinder
Fuel Type	Diesel
Key Features	Turbocharged, High-pressure fuel injection, Compact design, Lightweight

## Applications

### Industry Applications

- Engineering machinery
- Mining machinery
- Automotive
- Agricultural equipment
- Power generation
- Small and medium ships

## Operational Adaptability

### Environmental Adaptability

High-altitude compatible • Hot weather reliable • Cold weather reliable • Poor water quality tolerant