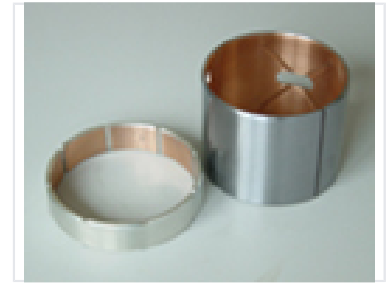


# Cylindrical Roller Bearing

Cylindrical roller bearings are designed to minimize friction and facilitate rotational movement in mechanical systems. These bearings have a metallic outer shell and an inner lining, with some models featuring a cross-shaped design for enhanced support and lubrication.



## Product Overview

### High-Performance Cylindrical Roller Bearing

These cylindrical roller bearings are precision-engineered to facilitate smooth rotational movement in demanding mechanical systems. Featuring a robust metallic outer shell paired with an advanced inner lining, they are designed to effectively minimize friction and enhance operational efficiency. These components serve as essential building blocks for industrial machinery requiring high load capacity and long-term durability.

## Design and Construction

### Design Features

- Metallic outer shell
- Copper-colored inner lining
- Integrated structural cross-design

## Applications

### Typical Applications

Industrial Machinery, Mechanical Systems, Rotational Assemblies