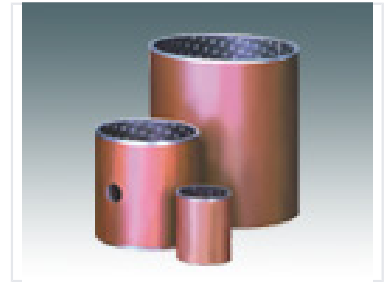


# Cylindrical Roller Bearing

Cylindrical roller bearings are designed for machinery applications. These bearings feature a robust construction with a metallic outer shell and a patterned inner surface, likely containing lubricant pockets, and are suitable for high-load and high-speed applications within machinery components.



## Product Overview

### High-Performance Cylindrical Roller Bearing

This cylindrical roller bearing is engineered for demanding industrial machinery applications, providing reliable performance under significant mechanical stress. Its robust construction features a durable metallic outer shell integrated with a precision-engineered inner surface, optimized for high-load and high-speed environments. The design includes specialized lubricant pockets to ensure consistent operation and extended service life in critical machinery components.

## Technical Specifications

Bearing Type	Cylindrical Roller Bearing
Key Performance Areas	High Load Capacity, High-Speed Operation, Industrial Machinery

## Construction Details

### Construction Features

- Robust metallic outer shell
- Patterned inner surface for lubrication retention
- Engineered for heavy-duty industrial machinery